

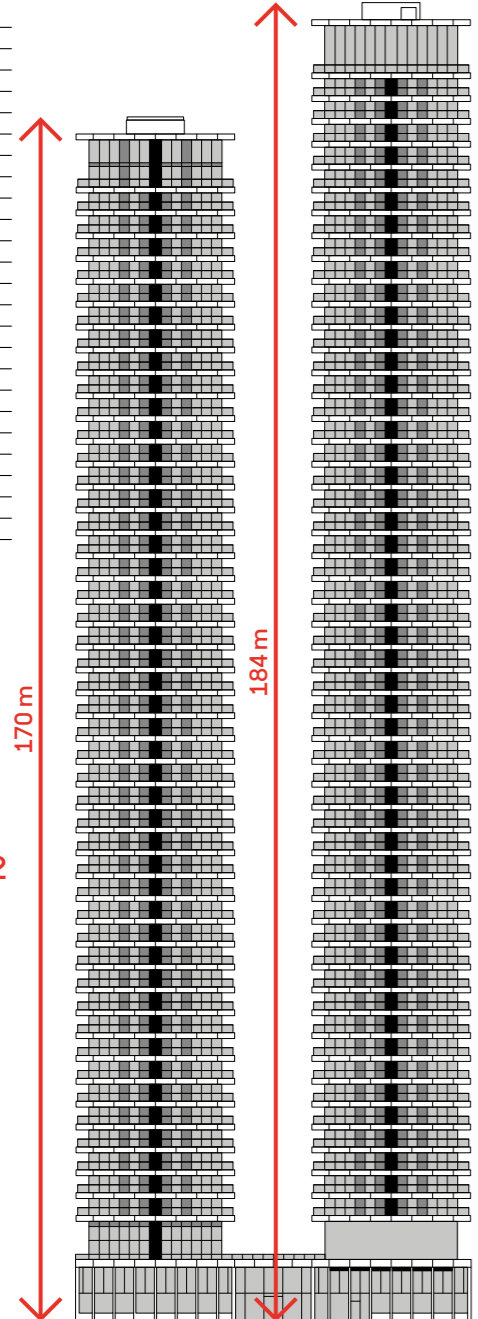
Wardian London

Execution	2017–2020
On site	11/2017–03/2020
Contract value	€75+ m
East Tower (height)	55 floors (184 meters)
West Tower (height)	50 floors (170 meters)
Balconies in total	3,880
Glazed railing	14,550 m ²
Façade area in total	40,000 m ²
Material for a single floor	ca 12 trucks
No. of trucks	1,400+
In total	792 apartments
Swimming pool	25 m

1,400+

40,000 m²

€ 75+ m

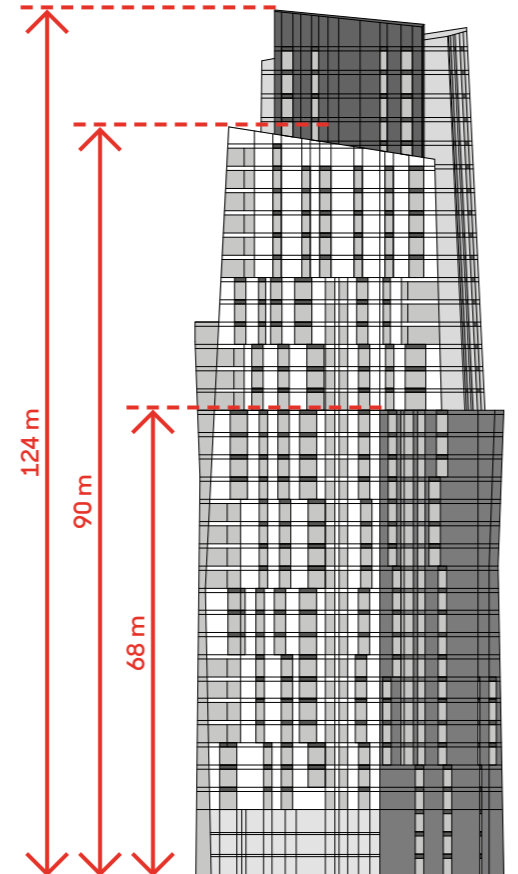


Nine Elms Point London

Execution	2014–2019
On site	05/2015–05/2019
Contract value	€32+ m
No. of floors on Block D (height)	18 (68 m)
No. of floors on Block G (height)	37 (124 m)
No. of floors on Block K (height)	27 (90 m)
No. of units	6,000+
Façade area in total	35,000 m ²
No. of trucks	500+
Designers involved	60
Hours spent on design works	ca 133,000

NO. OF UNITS 6,000+

500+



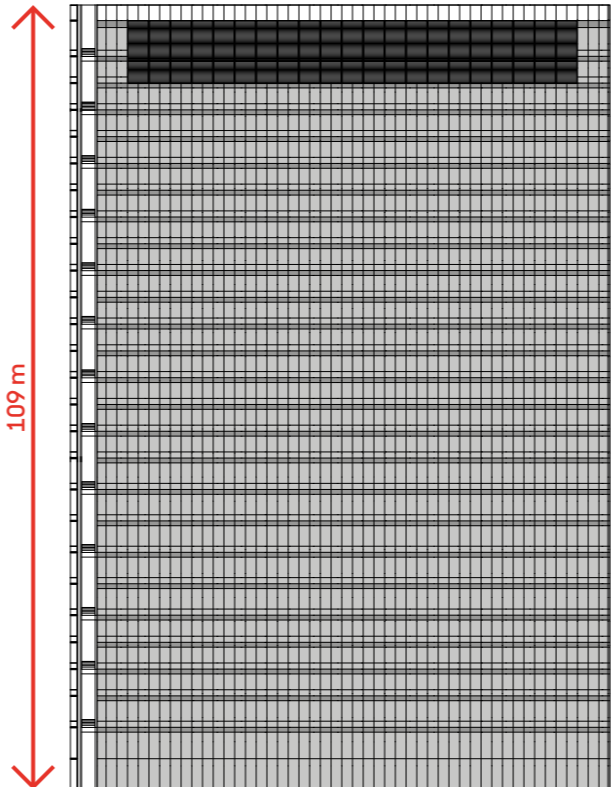
City Tower Prague

Execution	2006–2008
On site	02/2007–06/2008
Contract value	€10+ m
Number of floors (height)	27 (109 m)
Total value of unitted façade	24,000 m ²
Glass area of the envelope	90%
Total No. of glass panes	10,000 pcs
Typical dimension of 2 units types	3,000×3,750/4,400 mm + 1,875×3,750/4,400 mm
Aluminium volume	500 t
Average area of one unit	12 m ²
Unique patented system of installation	so-called installation railing
Insulation between double glass units	krypton (rare in the Czech Republic)

1 UNIT 12 m²

Al 500 t

PATENTED INSTALLATION



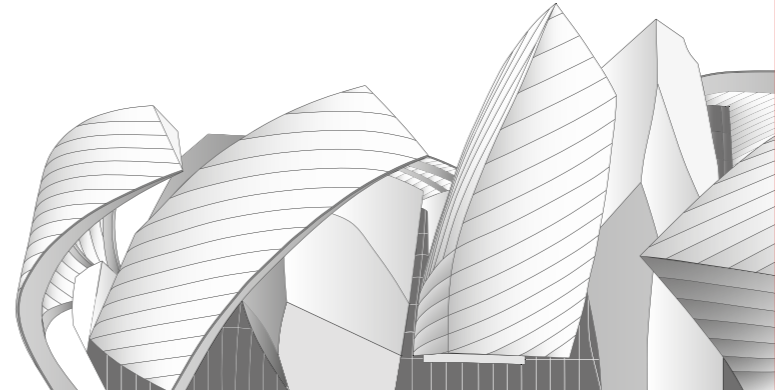
Fondation Louis Vuitton Paris

Execution	2009–2014
On site	07/2011–08/2012
Contract value	€25+ m
Max. height of glazed façade structure	40 m
Basic concrete slab	11,000 m ³ of concrete, 1,900 t of steel
Delivered by Sipral	5,000 m ² area of façades
	42 external glazed façades
	2 internal glazed façades
	300 t of steel
Designers involved	40
Hours spent on design works	ca 150,000

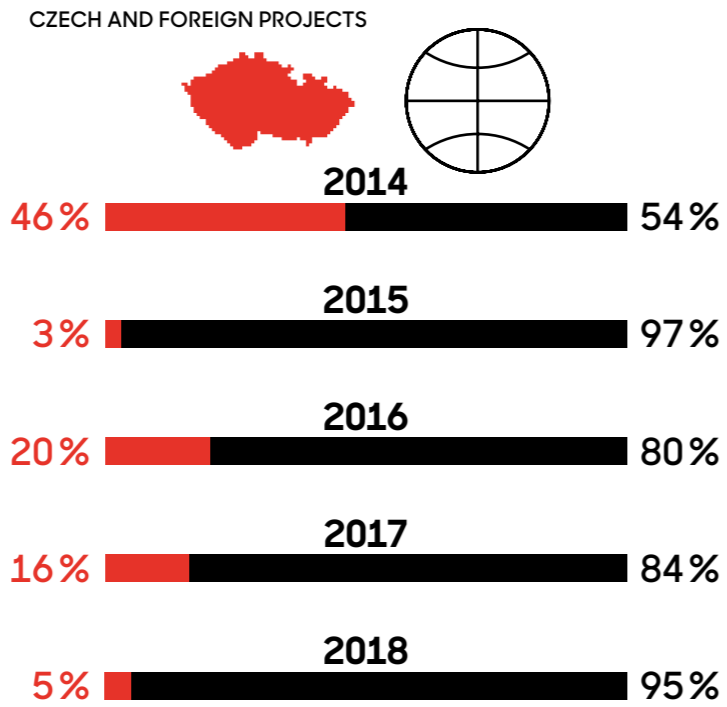
FAÇADE TYPES 44 ×

STEEL 300 t

DESIGN WORKS 150,000 h



START 1991	OFFICE AND PRODUCTION PREMISES BUILT 1995-1996	1 ST PROJECT ABROAD 1996	1 ST CONTRACT EXCEEDING A TURNOVER OF €5M 1998
100+ 1999	ISO 9001 CERTIFIED 2000	1 ST CONTRACT IN THE UK 2003	SIPRAL UK LTD. 2006
PRODUCTION AND STORAGE PREMISES BUILT IN JIRNY 2008	SIPRAL FRANCE 2009	1 ST CONTRACT EXCEEDING A TURNOVER OF €10M 2014	SIPRAL DENMARK 2014
EXCEPTIONAL CONTRACT EXCEEDING A TURNOVER OF €100M 2017	200+ 2017	NEW LONDON OFFICE 2017	

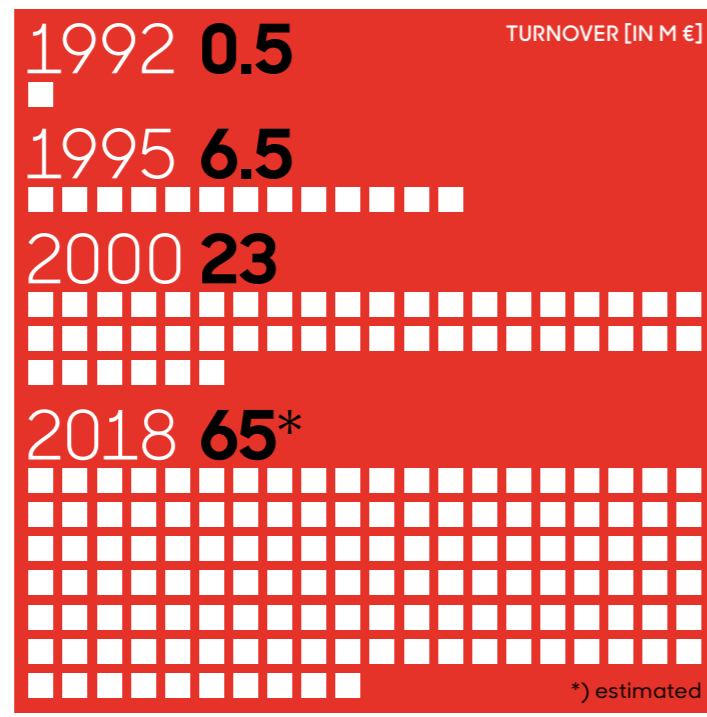
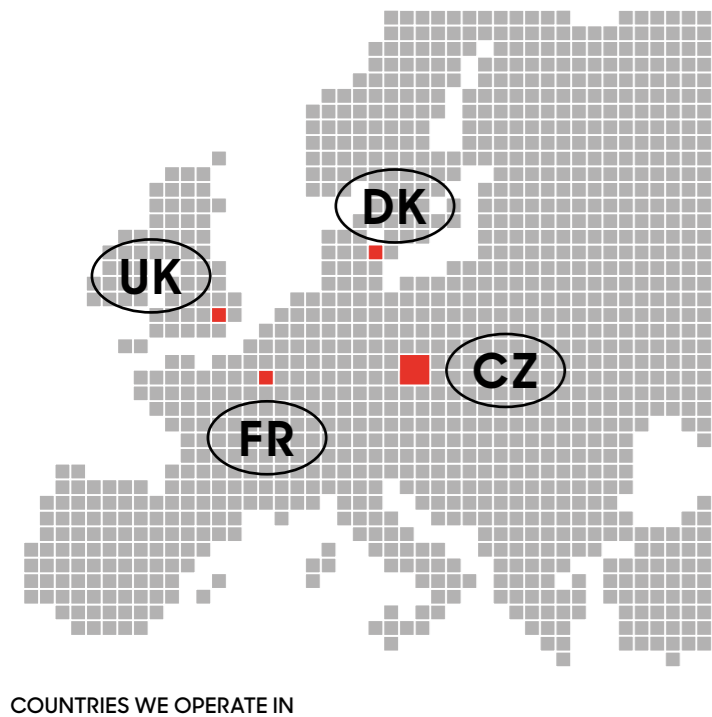


30,200 m ²	STORAGE & PRODUCTION AREA IN TOTAL
150,000 m ²	UNITISED FAÇADES CAPACITY PER YEAR
55	PROJECT DESIGNERS
7	CNC MACHINES

EMPLOYEES

Region	Count
SIPRAL CZ	205
SIPRAL UK	3
TOTAL	273

320 PROJECTS	160 CLIENTS
97 ARCHITECTS	8 COUNTRIES



- 2000 MAYOR OF PRAGUE AWARD [SIPRAL HQ BUILDING]
- 2001 BUILDING OF THE YEAR AWARD [GOLDEN ANGEL, CORSO KARLÍN]
- 2003 MIPIM: ARCHITECTURAL REVIEW [DANUBE HOUSE, RIVER CITY]
- 2008 BEST OF REALTY [CITY TOWER]
- 2011 INT. PROPERTY AWARDS LONDON: BEST OFFICE DEVELOPMENT [MAIN POINT KARLÍN]
- 2012 MIPIM AWARDS: THE WORLD'S BEST OFFICE BUILDING 2011 [MAIN POINT KARLÍN]
- 2014 CEEQA AWARD: THE BEST OFFICE BUILDING 2014 [FLORENTINUM]
- 2016 EY ENTREPRENEUR OF THE YEAR* PRAGUE WINNER [LEOPOLD BAREŠ]
- 2017 FRENCH-CZECH CHAMBRE OF COMMERCE AWARD [SIPRAL]
- 2017 EUROPEAN STEEL DESIGN AWARDS 2017 [AMAGER BAKKE]

PROJECT TEAMS EMPLOYEES

14 COO & PROCUREMENT	11 MANAGEMENT
12 SALES	55 DESIGN
105 PRODUCTION & LOGISTICS	12 PROJECT MANAGEMENT

- UNITISED FAÇADES
- STICK-SYSTEM FAÇADES
- BESPOKE DESIGN STRUCTURES
- SKYLIGHT STRUCTURES

WWW.SIPRAL.COM © 2019